

ARCHITECTURAL ZINC

Superior performance for superior design

Jarden Zinc and **ZAHNER** Custom Patinas

If you thought expanding your use of building materials to include zinc meant limiting your choice of colors and textures, think again. Architectural zinc can now be found in a variety of styles.

Want to really make a statement? Consider mixing colors and textures. You'll get a result that will not only stand out from the crowd, but will also stand the test of time.

Patinated zinc extends the palette of zinc to architects and designers who want something that gives their projects a timeless signature look. It is a way to promote superior design.



jardenzinc.com

ARCHITECTURAL ZINC

Contact our sales team for more information about our company and products.

Toll-Free:
(800) 251-7506

Phone:
(423) 639-8111

Fax:
(423) 639-3125

Email:
sales@jardenzinc.com

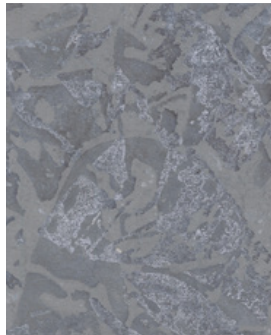
Website:
jardenzinc.com

Address:
Jarden Zinc
P.O. Box 1890
Greeneville, TN 37744-1890

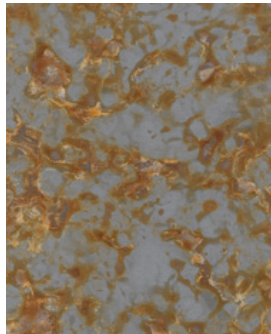


Superior performance for superior design

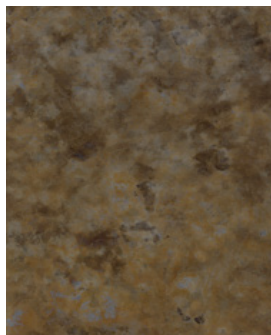
Jarden Zinc is the exclusive zinc provider of Zahner custom patinas. Available colors include:



Hunter[™], a pre-weathered zinc surface used on the Hunter Museum of American Art in Chattanooga, Tennessee, whose tonality closely resembles the limestone surroundings.



Roano[™], first developed because the architect for the Taubman Museum in Roanoke, Virginia, wanted a façade that was derived from the rich colors of the Blue Ridge Mountains, showcasing the rich colors of the mountain leaves.



Baroque[™], a chocolate brown with flecks of yellow, with a visually pleasing uniqueness like no other patina produced before.

Specifications

Alloy: Jarden Zinc 710 (EN988/1179)

Specification: ASTM B69-13

Width: Up to 43" (1100mm)

Gauge: Up to 0.118" (3mm)

Length: Up to 130" (3300 mm)

Coil: Not available

Sample swatches are intended to represent general color range. Precise color is difficult to obtain in print. Final selection should be made with product samples.