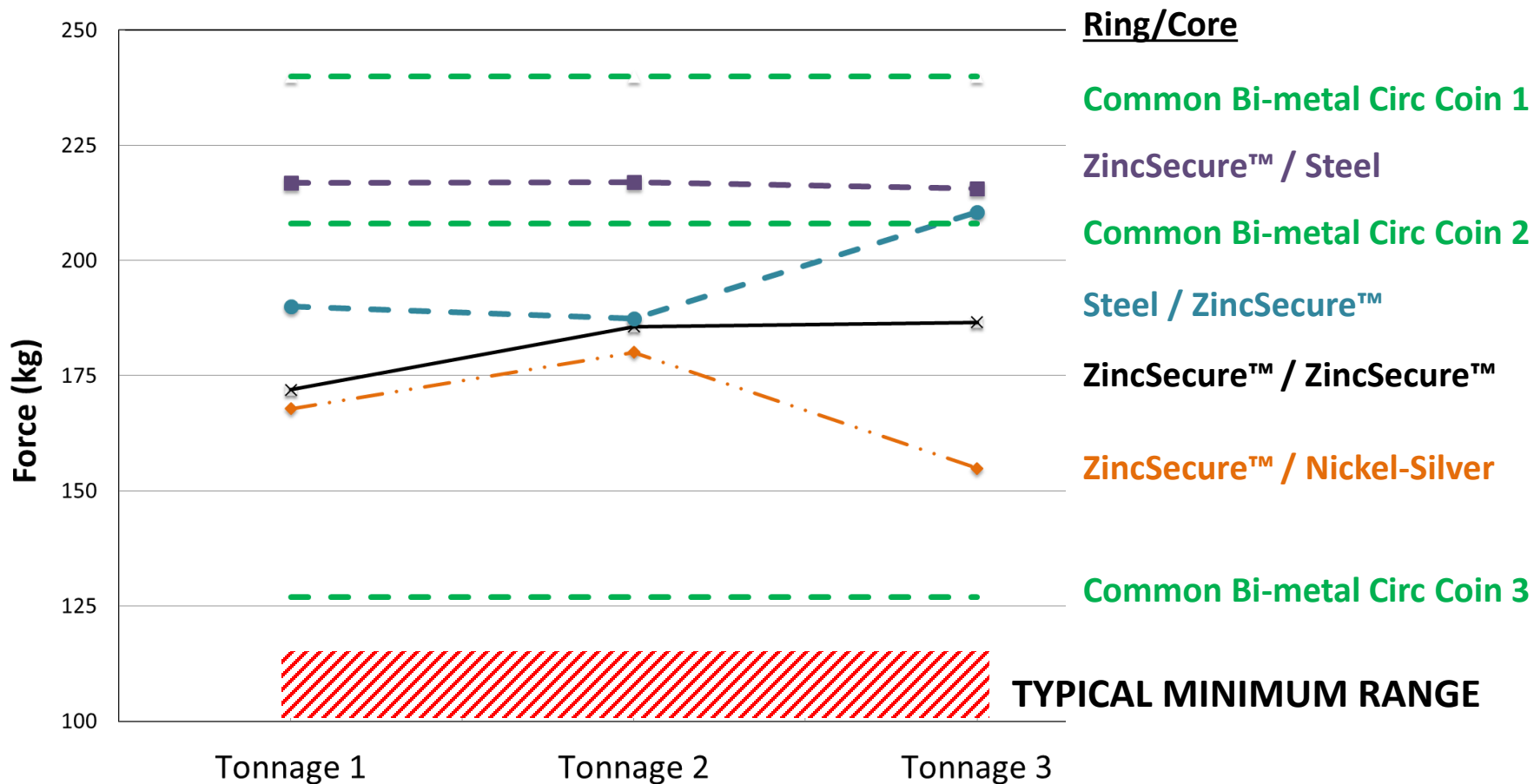


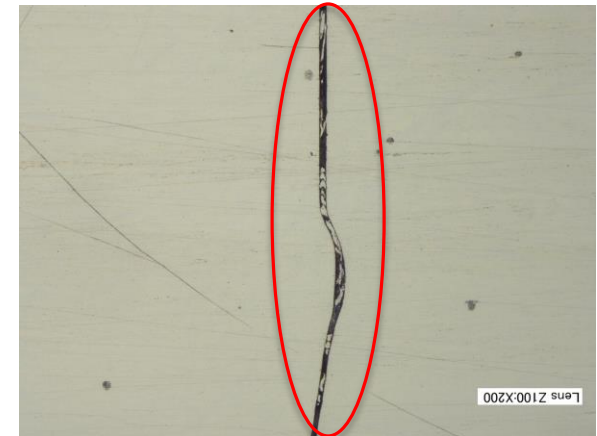
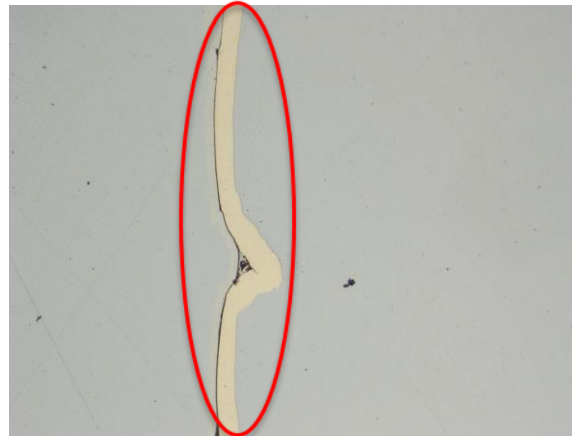
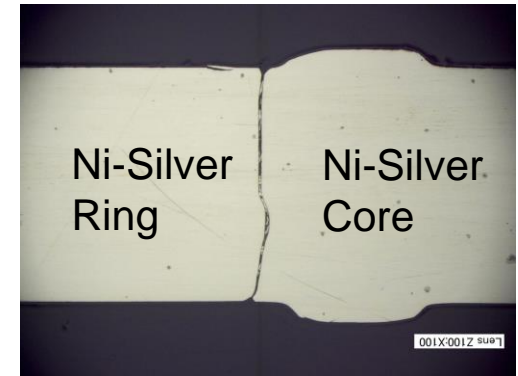
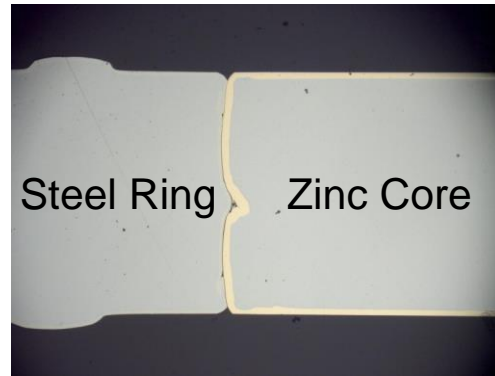
# Die Pressure – Separation Force Effect



**ZINCSECURE™ MEETS MARKET EXPECTATIONS**



# Groove Fill - Separation Force Effect



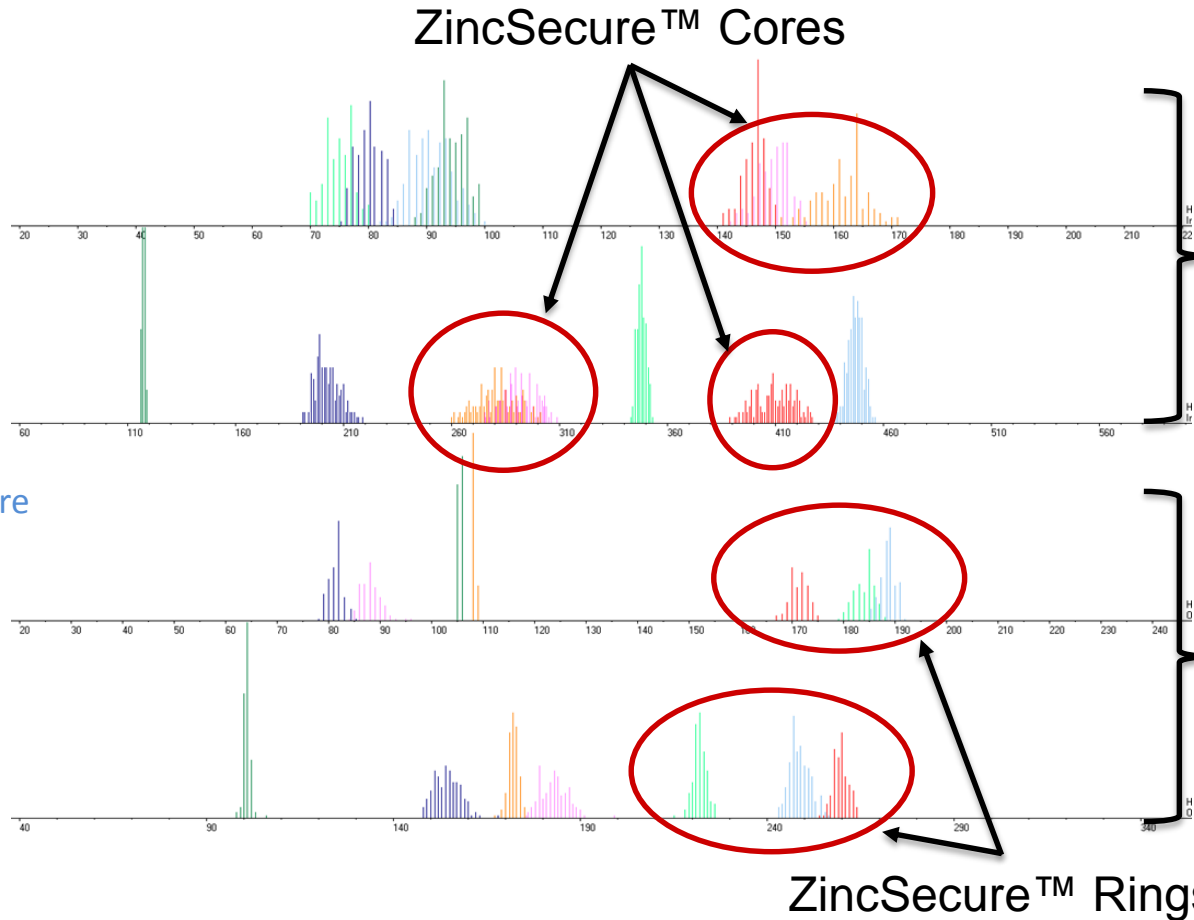
***GOOD GROOVE FILLING LED TO HIGH SEPARATION FORCE***



# ZincSecure™ Bi-metal EMS

## Bimetal Materials:

- ZincSecure™ Ring/  
ZincSecure™ Core
- Steel Ring/  
ZincSecure™ Core
- ZincSecure™ Ring/  
Steel core
- Steel Ring/Steel Core
- Ni-Silver Ring/  
Zincsecure™ Core
- Zincsecure™ Ring/  
Ni-Silver Core
- Ni-Silver Ring/  
Ni-Silver Core



Sensor Measures Primarily the Core

Sensor Measures Primarily the Ring

***DISTINCT EMS WITH ZINCSECURE™ AS A COMPONENT***

