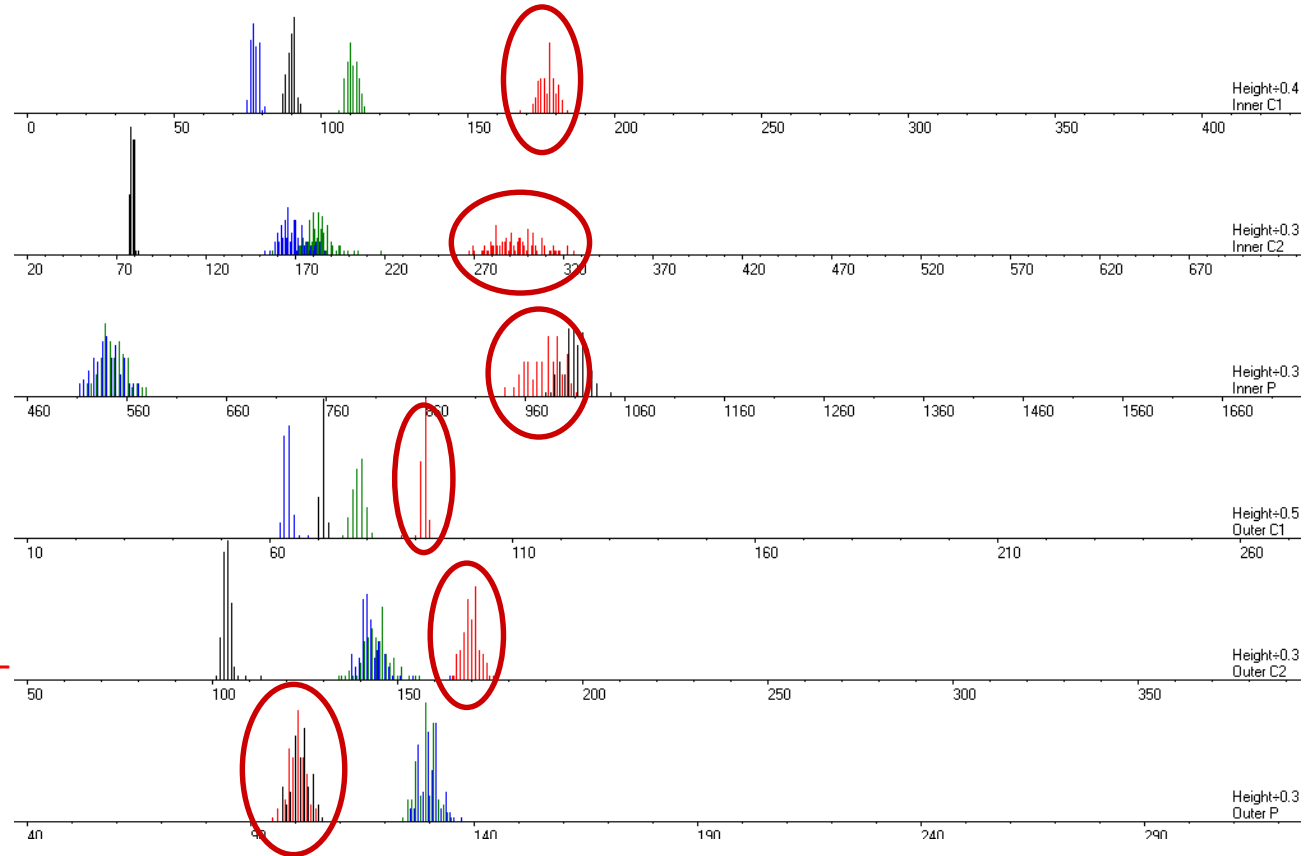


Materials Included:

- Multi-Ply Plated Steel Ni-Cu-Ni (5µm/12µm/5µm)
- Mono-Ni Plated Steel (25µm)
- Cupronickel
- ZincSecure™ Nickel-Copper Plated Zinc

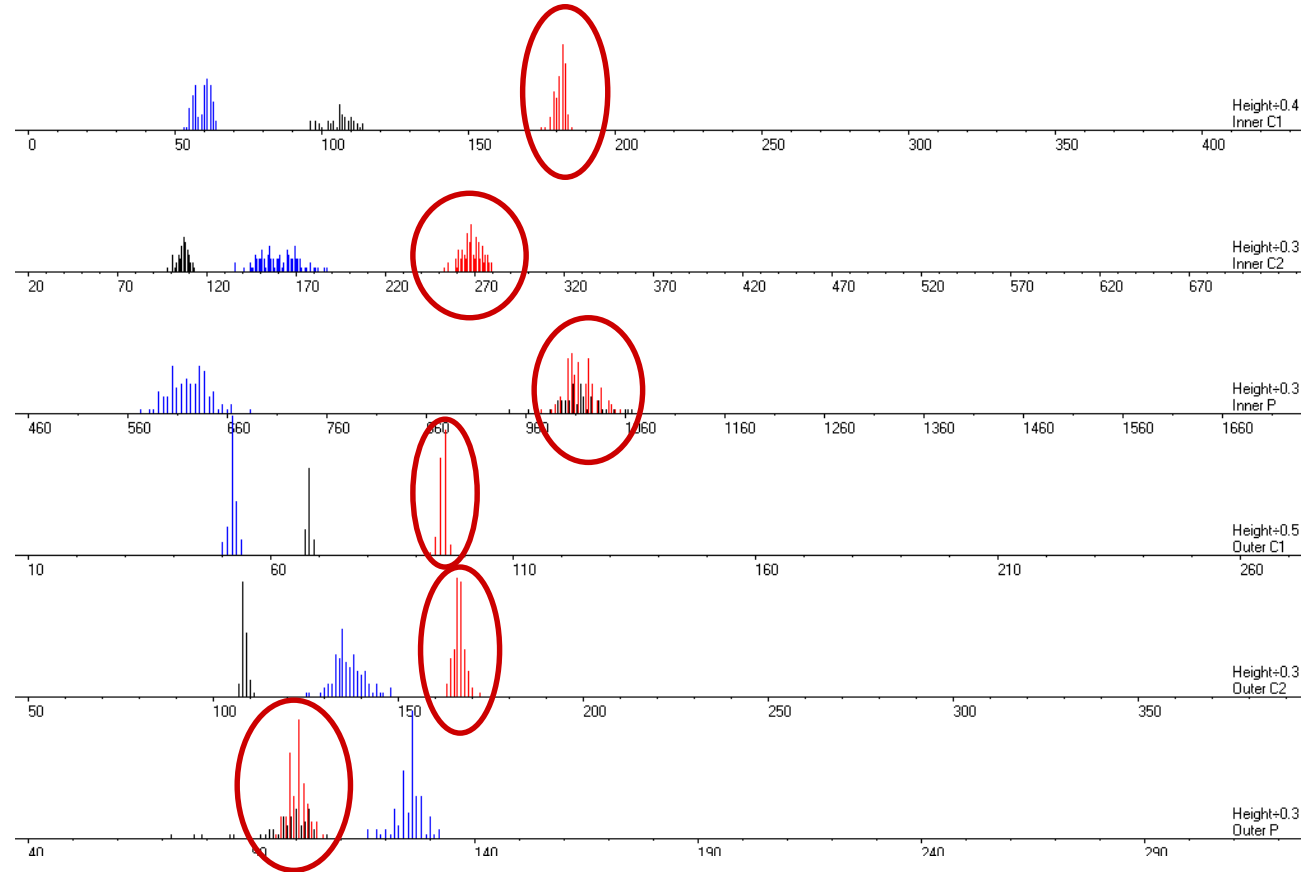


ALTERNATIVE EMS vs. COMMON WHITE FINISHES



Materials Included:

- Mono-Bronze Plated Steel (25µm)
- Aluminum Bronze
- ZincSecure™ Bronze-Copper Plated Zinc



ALTERNATIVE EMS vs. COMMON YELLOW FINISHES



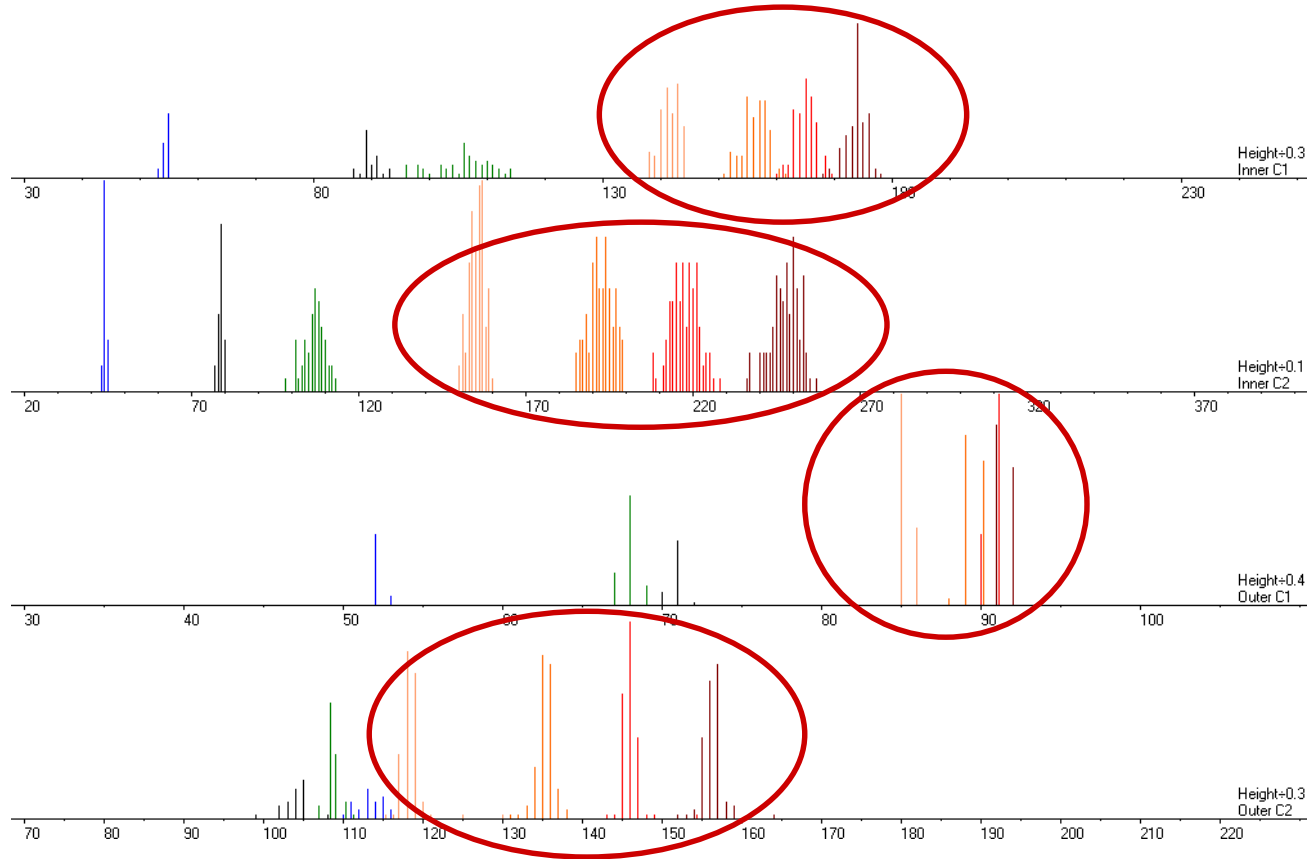


SC4000 – Substrates (no plating)



Materials Included:

- Stainless Steel 316
- Cupronickel
- Aluminum Bronze
- ZincSecure™ Alloy A
- ZincSecure™ Alloy B
- ZincSecure™ Alloy C
- ZincSecure™ Alloy D



MULTIPLE ZINC ALLOYS CREATE DISTINCT SIGNATURES



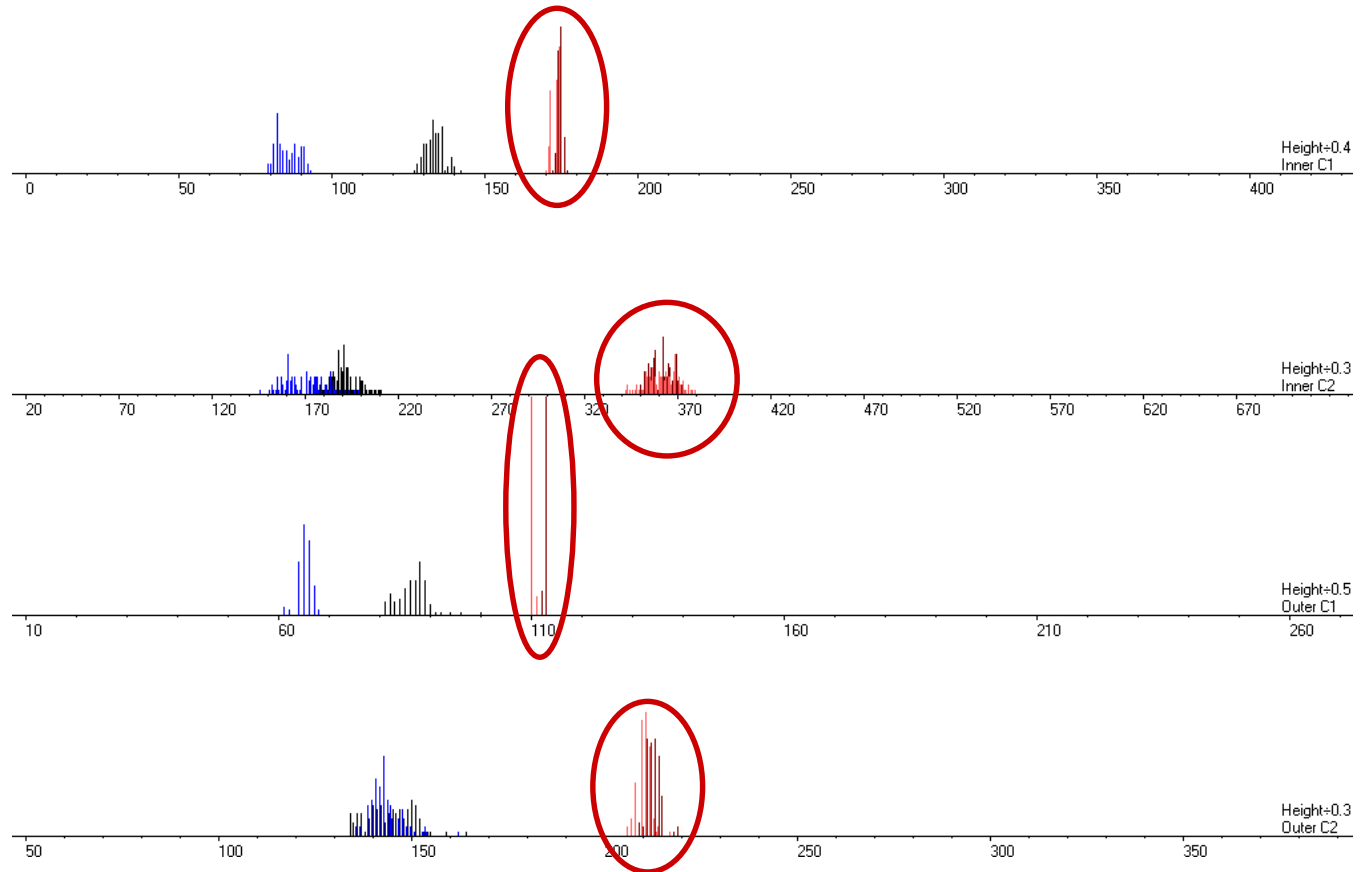


SC4000 – Plating Wear Effect on EMS



Materials Included:

- Copper Plated Steel (20 μ m)
- Copper Plated Steel (8 μ m)
- ZincSecure™ Copper Plated Zinc (20 μ m)
- ZincSecure™ Copper Plated Zinc (8 μ m)



ZINC BASE DRIVES THE EMS

